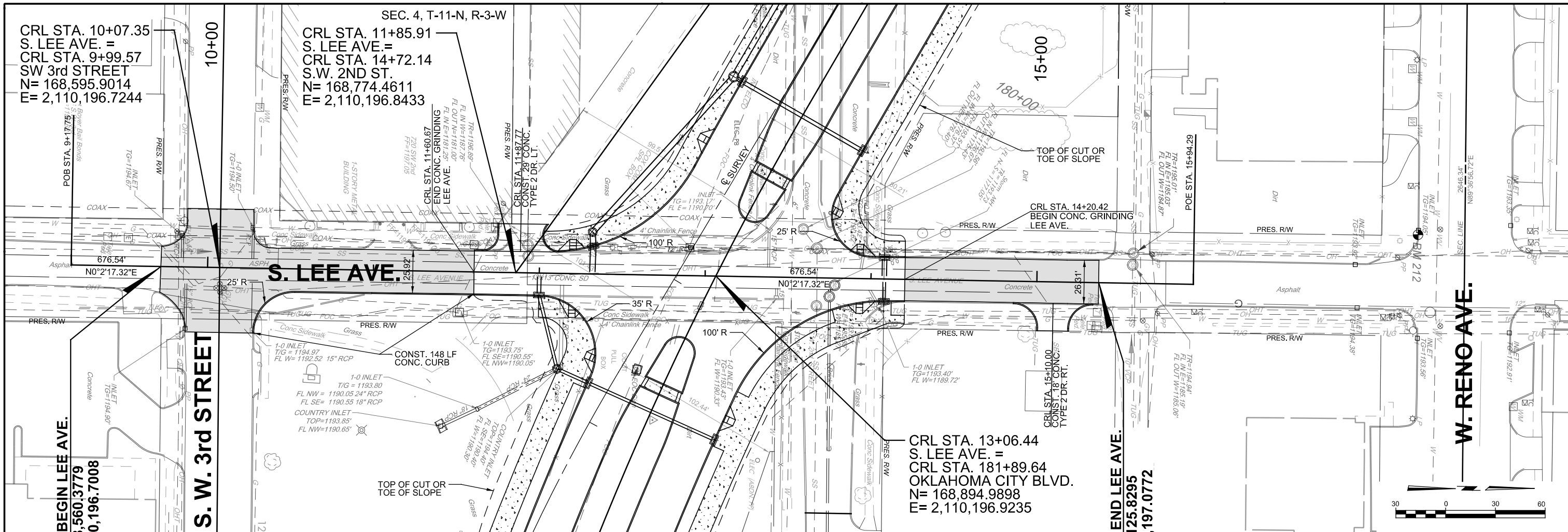
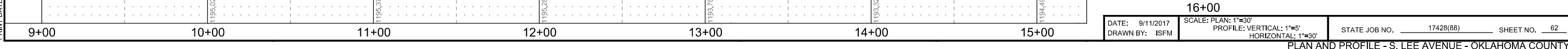


PRINT DATE: 9/11/2017 T:\1024-05\Drawings\Roadway\Prelim\Plan\1024-05-pp.11.dgn



1205	STA. 9+71.83 BEGIN LEE AVE. N= 168,560.3779 E= 2,110,196.7008	STA. 9+81.32 EXIST. GAS LINE CROSSING EXACT DEPTH UNKNOWN	STA. 9+82.62 EXIST. WATER LINE CROSSING EXACT DEPTH UNKNOWN	STA. 9+94.90 EXIST. GAS LINE CROSSING EXACT DEPTH UNKNOWN	STA. 10+07.93 EXIST. GAS LINE CROSSING EXACT DEPTH UNKNOWN	STA. 10+12.06 EXIST. GAS LINE CROSSING EXACT DEPTH UNKNOWN	BENCHMARK: #212 CUT "X" T/C PCR SW-W LEE & RENO 371.29' LT. OF CL SURVEY CL STA. 179+46.88 ELEV. = 1187.41	STA. 12+27.69 EXIST. TUG LINE CROSSING EXACT DEPTH UNKNOWN	STA. 12+83.14 EXIST. FOC LINE CROSSING EXACT DEPTH UNKNOWN	BENCHMARK: #211 CUT "X" T/C E PCR OF N ALLEY ON SHARTEL BETWEEN CALIFORNIA & RENO 376.18' LT. OF CL SURVEY CL STA. 174+71.66 ELEV. = 1195.97	STA. 13+07.30 EXIST. GAS LINE CROSSING EXACT DEPTH UNKNOWN	STA. 13+52.18 EXIST. 6" WATER LINE CROSSING EXACT SIZE & DEPTH UNKNOWN	STA. 14+97.27 EXIST. TUG LINE CROSSING EXACT DEPTH UNKNOWN	STA. 15+59.19 EXIST. TUG LINE CROSSING EXACT DEPTH UNKNOWN	STA. 15+62.50 EXIST. GAS LINE CROSSING EXACT DEPTH UNKNOWN	BENCHMARK: #212 CUT "X" T/C PCR SW-W LEE & RENO 371.29' LT. OF CL SURVEY CL STA. 179+46.88 ELEV. = 1187.41	1205	
1200																	1200	
1195																		1195
1190																		1190
1185																		1185



DATE: 9/11/2017 SCALE: PLAN: 1"=30'
DRAWN BY: ISFM PROFILE: VERTICAL: 1"=5'
HORIZONTAL: 1"=30'

STATE JOB NO. 17428(88) SHEET NO. 62

PLAN AND PROFILE - S. LEE AVENUE - OKLAHOMA COUNTY